

# Guide to sorting waste for businesses and institutions



**IRF**



# About IRF

---



## About IRF

IRF is a Faroese inter-municipal waste and recycling company, which is jointly owned and administered by all municipalities in the Faroe Islands, except for Tórshavn. IRF operates in the area of its members all over the Faroe Islands and employs around 100 people.

IRF's operations include:

- Collecting household and commercial waste
- Recycling
- Incineration plant
- Waste oil treatment plant
- Handling of hazardous waste
- Recycling centre and landfill in Trøllavík, on the island of Suðuroy
- Iron recycling centre at Gjánoyri, on the island of Streymoy
- Vehicle scrappage sites in Klaksvík, Sandoy and Suðuroy
- Vehicle repair shop in Klaksvík
- Sewage management

## Circular economy – the way forward

IRF supports and works toward spreading the vision of a circular economy in the Faroe Islands. Circular economy is a framework for rethinking consumption and production in an environmentally and commercially sustainable way. The concept is based upon the cycles of nature, where everything is recycled in a new context instead of being left to waste.

A prerequisite for the circular economy is that we become better at sorting valuable resources for recycling from waste. These guidelines are intended to help those wishing to extend the environment as well as lending future generations a helping hand by sorting waste properly. Together we can leave a more sustainable world for future generations.

# Paper and cardboard recycling



## Clean paper

- Shredded paper
- Copy paper
- Magazines and newspapers
- Envelopes etc.

## Clean cardboard

- Cardboard boxes
- Corrugated cardboard
- Carton board etc.

## Suitable equipment

Compactor, skip, plastic container or white business recycling bag.

## Save through recycling

Recycling paper and cardboard presents a clear economic advantage for businesses, municipalities and institutions. Recycling shredded paper, for instance, costs 40 DKK ex VAT per m<sup>3</sup>, whereas it costs 216 DKK ex VAT to incinerate. This represents a 440% saving per m<sup>3</sup>. The same applies for properly separated cardboard and paper.\*

**75% of all materials are only used once. Paper can be recycled up to 7-10 times. Resources or garbage?**

\*Prices might be subject to changes

# Recycling plastic



## Recycling plastic

- Seine, trawls and fishing nets
- Aquaculture cage (with no polystyrene)
- Large sacks
- Plastic (PET) bottles
- Plastic of the same kind, in large quantities

### Suitable equipment

Skip, big bags or clear bags which can be bought from IRF, amongst others.

**It is estimated that in 2050, there will be more plastic than fish in the oceans – together we can make a difference.**

### Clear, soft plastic

Clear, clean and soft plastic. Plastic is soft when you can tie a knot on it.

- Plastic wrap (plastic film) from pallets
- Bubble wrap
- Soft plastic wrap from product packaging
- Plastic from e.g. clothing products or other

### Coloured plastic

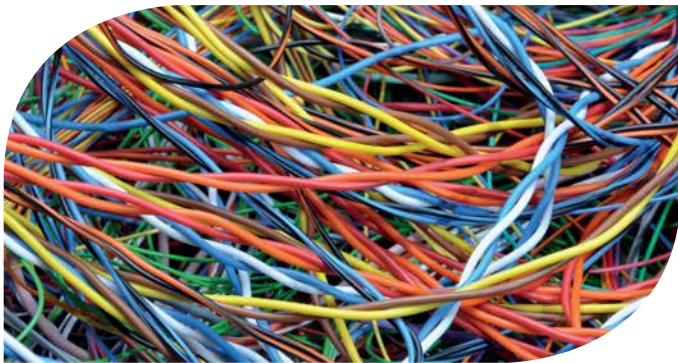
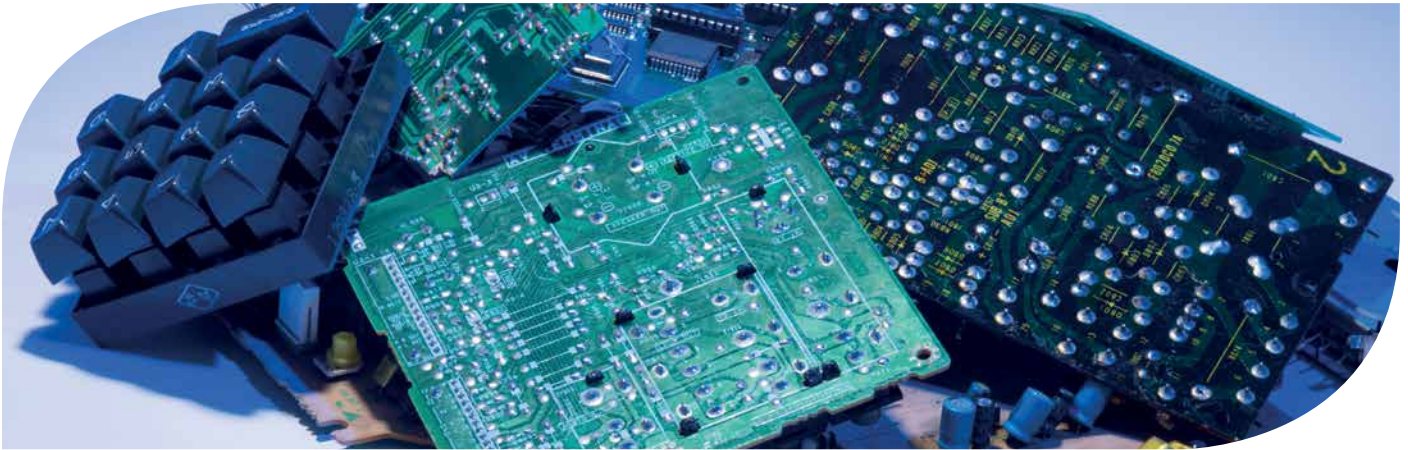
Hand in coloured plastic separately.

### Suitable equipment

Compactor, skip or clear bags.

IRF sells clear bags (240 L.) designed for plastic wrap and plastic bottles. Stands for the bags can be bought from other suppliers.

# Electronics, iron and metal



## Electronics

- Cables and cords (separately)
- Computers, mobile phones, printers
- Tools and household appliances
- Electronic appliances of all kinds

### Suitable equipment

Larger volumes on a pallet or in a box that can be transported using a forklift truck. Or in other containers that can be carried and do not exceed 20 kg. If you need to dispose of a large machine, separate the electrical components and recycle as electronics. Recycle the iron frame separately as scrap iron.

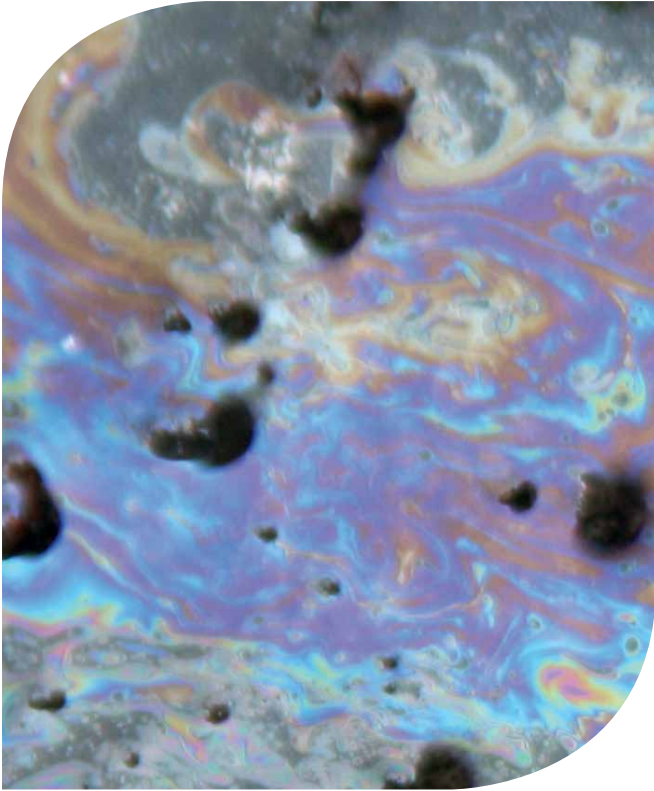
## Iron and metal

- Copper, aluminium, steel etc.
- Sheets, tanks, shutters, chains, pipes
- Radiators, stoves, roof tiles, fencing
- Cans, screws, iron chips, engine parts etc.

### Suitable equipment

Skip. Must be separated into aluminum, copper, stainless steel, iron, electric motors and cables.

# Waste oil and hazardous waste



## Waste oil and similar substances

- Waste oil
- Oil-contaminated water
- Heavy oil sludge
- Water used to clean tanks and in oil separators

### Suitable equipment

Waste oil tank. IRF's road tankers can collect waste oil and oil-contaminated water.

### Nearly 100% of waste oil is recycled

Almost 100% of the 4000-4500 m<sup>3</sup> of waste oil and oil-contaminated water received by the waste oil treatment plant is successfully purified and recycled. Only a small percentage can not be recycled, and is incinerated at IRF.

## Hazardous waste

- All chemical substances, solvents and paint
- Herbicides and pesticides
- Fluorescent tubes and energy saving light bulbs
- Acids and alkalis
- Batteries, accumulators and pressure vessels

### Suitable equipment

Make sure that hazardous waste is secured in an appropriate container. Make sure that chemical substances, toxins etc. are not mixed. This could cause lethal fumes and even explosions.

If chemical substances are not in their original container, label the container accordingly so that IRF can handle it correctly. For safety reasons, fluorescent tubes must be recycled in oblong cardboard boxes, which can be purchased from IRF. IRF collects hazardous waste upon agreement.

# Landfill



## Landfill

Landfill waste must be separated into three categories before it is brought to IRF:

### Plaster

Plaster must under no circumstances be incinerated. Burning plaster releases highly polluting emissions and corrodes the incinerator at the incineration plant. Plaster must be brought to IRF separately.

### Suitable equipment

Plaster can be brought to IRF in a closed container or a big bag so it is kept dry. It is very important that the plaster is not exposed to rain as it is impossible to handle once wet.

### Asbestos

Asbestos must be handled with great caution and wrapped carefully before it is brought to IRF.

### Suitable equipment

Due to safety reasons, whole asbestos sheets must be securely placed on a pallet and wrapped to prevent any carcinogenic dust from escaping.

For safety reasons, all fragments must also be bagged in order to make sure no carcinogenic dust escapes, as it could harm the health of the employees assigned to handle it.

### Mixed landfill waste

- Insulation material, pressure treated wood, PVC plastics, sandwich panels
- Glass fibre, glass facades, windows, large sheets of glass
- Wash basins, toilets, ceramics, ash, concrete slurry

### Suitable equipment

Skip. Smaller volumes can be placed in big bags. Insulating materials must be placed in closed plastic bags to prevent them from being scattered by wind.

# Waste for incineration

---



## Waste for incineration

- Large waste for incineration (larger than 1,2 m)
- Small waste for incineration (smaller than 1.2 m)
- High-energy waste (such as plastic, tyres, pipes, etc.)
- Drained biological waste (carcasses of sheep, birds, fish and other animals)

Sheep: Stomachs must be emptied. Guts and remnants must be well drained and placed in a plastic bag before they are brought for incineration.

When disposing of skins, salt must be scraped off before they are brought in. IRF does not accept sheep droppings.

Birds: Feathers must be placed in semi-airtight bags in order to prevent sudden bursts when waste is handled.

Cattle and horses: Animals must be dismembered into 10 kg pieces before carcasses are brought to IRF for incineration. Remains must be thoroughly drained and stomachs emptied.

### Suitable equipment

Skip, plastic container or grey company waste bags.



# Information about equipment

## For sale \*

<b>Gray IRF waste bag</b>	Roll w/ 5 pcs	DKK 100,00 ex/VAT
<b>Grey commercial waste bag</b>	Roll w/10 pcs	DKK 300,00 ex/VAT
<b>White commercial waste bag</b>	Roll w/10 pcs	DKK 150,00 ex/VAT
<b>Big bags</b>	Per pc	DKK 80,00 ex/VAT
<b>Clear bags (240 L)</b>	Roll w/10 pcs	DKK 100,00 ex/VAT
<b>Box for clinical waste</b>	30 L.	DKK 105,00 ex/VAT
<b>Box for clinical waste</b>	60 L.	DKK 130,00 ex/VAT

\*Prices might be subject to changes



## Specifications

<b>Closed skips:</b>	Are useful when you have several m <sup>3</sup> of waste – available to hire from IRF.	<b>White commercial bags:</b>	Intended for cardboard and paper recycling – available to purchase from IRF.
<b>Open skips:</b>	Suitable for large volumes of construction waste – available to hire from IRF.	<b>Big bags:</b>	Suitable for plaster, asbestos and mixed landfill waste – available to purchase from IRF.
<b>Plastic containers:</b>	Suitable for smaller volumes of waste, 770-1100 L – not available from IRF.	<b>Clear bags:</b>	Suitable for recycling plastic, bottles, tins etc. – available to purchase
<b>Grey commercial waste bags:</b>	Suitable for ordinary kitchen waste and similar waste for incineration – available to purchase from IRF.		

# ÁWAY SERVICE

Tróndargöta 63 · FO 512 Norðragöta  
Tlf. +298 471717 · away@away.fo

 **HIAB**  **TOYOTA TRUCK**  **Kalmar**  **BT**



**Flutningsakfør til vinnuligt og privat**



[www.bergmotors.fo](http://www.bergmotors.fo)

## EL TEKNIK

**Vit gera el-arbeiðir frá  
tekniborði til liðugt arbeiðið**

Telefon +298 443313 · [www.elteknik.fo](http://www.elteknik.fo) · E-mail: [elteknik@elteknik.fo](mailto:elteknik@elteknik.fo)

### Set teg í samband við serfrøðingarnar

Kemilux serlur pakkning av  
hágóðsku til fiskiðnaðin,  
umframt alt innan reingerð,  
til matframleiðslu



# KEMILUX

[www.kemilux.com](http://www.kemilux.com)

Tel +298 662000 · Fax +298 350831 · [kemilux@kemilux.com](mailto:kemilux@kemilux.com)

**tts** el & maskin  
verkstadir

Tlf.: 470 600 · [www.tts.fo](http://www.tts.fo)

### Ráðgevandi verkfrøðingar innan:

- HVS-skipanir
- Vatnveitingar og vatnreinsiverk
- Kloakkleiðingar og kloakkreinsiverk
- Spilloljuverk
- Kraftverksskipanir
- Orkusparandi tiltøk
- Køliskipanir
- Fjarhitaskipanir
- Sprinklaraskipanir
- Køvigass skipanir
- Projekteringsleiðsla
- Byggileiðsla



**CONSULT**

RÁÐGEVANDI VERKFRØÐINGAR F.F.L.

R.C. Effersøesgøta 24

Postboks 1395

FO-110 Tórshavn

Tlf +298 30 82 00

Faks (+298) 30 82 01

Teldupostur [pbc@pbc.fo](mailto:pbc@pbc.fo)

[www.pbc.fo](http://www.pbc.fo)



**Bærendsen Teknik**

**MASKINVERKSTADUR  
EL-VERKSTADUR & EL-HANDIL**

Sjógøta 165  
FO-800 Tvøroyri

Fax: 37 19 97  
Mail: btek@btek.fo

Tlf: **37 12 96**



**ZAMPELL**

*Ildfast Service der Holder*

VI TILBYDER HØJTEMPERATURLØSNINGER FOR OPTIMAL FORBRÆNDING I:

- affalds- og biomasseovne af enhver type
- industri- og procesanlæg
- krematorie- og specialovne

Transportbuen 11  
4700 Næstved  
Tlf.: +45 5572 6979

Nedergårdsvej 5-7  
7260 Sdr. Omme  
Tlf.: +45 9717 2410

[www.zampell.dk](http://www.zampell.dk)  
[mail@zampell.dk](mailto:mail@zampell.dk)



Simon Moos Maskinfabrik A/S udvikler, producerer og sælger kundetilpassede slamsugere, recyclere samt anlæg til volumenreduktion, håndtering og hygiejnisering af slam. Vi er førende i branchen i relation til viden om slamafvanding og slambehandling, hvilket er fundamentet for udviklingen af vore effektive kvalitetsprodukter. Virksomheden blev grundlagt i 1978 og er en internationalt orienteret virksomhed med kunder i mere end 30 lande.

**Simon Moos**  
Maskinfabrik a/s

Kallehave 33, Hørup • DK-6400 Sønderborg  
Tel. +45 74 41 50 51 • Fax +45 74 41 52 08  
[smm@simonmoos.com](mailto:smm@simonmoos.com) • [www.simonmoos.dk](http://www.simonmoos.dk)



# IRF

Víkarvegur 107  
FO-520 Leirvík  
Tel 41 42 43  
irf@irf.fo  
www.irf.fo



Scan the QR code  
and go directly to our website.



IRF is internationally ISO14001:2015  
certified to handle waste oil and  
hazardous waste.